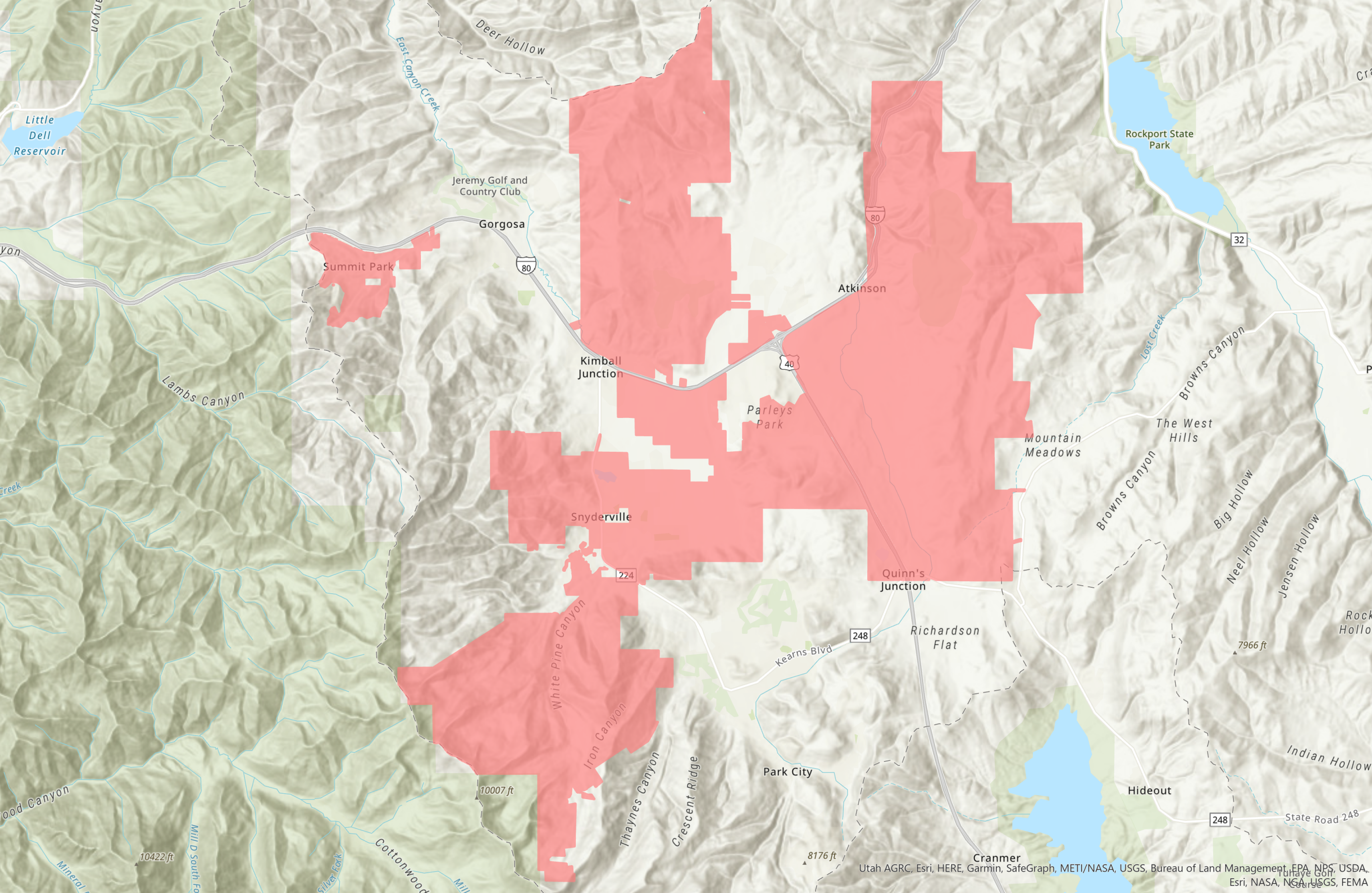


NOTICE OF INTENT TO CREATE AN IMPACT FEE FACILITIES PLAN

Mountain Regional Water Special Service District, a special service district of the State of Utah, located in Summit County, intends to commence the preparation of an independent and comprehensive Impact Fee Facilities Plan and therefore, pursuant to the provisions of 11-36a-501 of the Utah Code, as amended, notice is hereby provided to you of the intent of Mountain Regional Water Special Service District to create an Impact Fee Facilities Plan. The proposed impact fee facilities will be located within the Snyderville Basin and the Promontory Development in Summit County, Utah, as depicted on the attached map. Those receiving this Notice are invited to provide information to be considered in adopting the Impact Fee Facilities Plan. For information, please contact Lisa Hoffman, Assistant General Manager in person (by appointment) at our main office located at 6421 North Business Park Loop Road Suite A; via the US Postal Service to P.O. Box 982320, Park City, Utah, 84098; or by email at lhoffman@mtregional.org. Any information received should be provided in writing.



Little Dell Reservoir

Rockport State Park

Jeremy Golf and Country Club

Gorgosa

Summit Park

Atkinson

Kimball Junction

Parleys Park

Mountain Meadows

Snyderville

Quinn's Junction

Richardson Flat

Kearns Blvd

Park City

Hideout

Cranmer

Utah AGRC, Esri, HERE, Garmin, SafeGraph, METI/NASA, USGS, Bureau of Land Management, EPA, NPS, USDA, Esri, NASA, NGA, USGS, FEMA